

Academy Equipment

Students are expected to have the correct equipment at all times. This should be placed onto the desk at the start of every lesson to show that the student is prepared to learn. If the correct equipment is not presented then the student will receive a negative point and a detention.

All students should have the following equipment at all times:



Two black or blue pens



One red pen



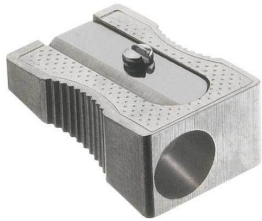
One pencil



One 30cm ruler



One rubber



One pencil sharpener



One pencil case



One school bag (capable of carrying A4 folder)

	1Mon	1Tue	1Wed	1Thu	1Fri
1	70A-Rs CP RS3 Religious	70A-Fr YB L6 French	70A-Fr YB L6 French	70A-Ma RH C4 Music	70A-Ad RB C5 Art And De
2	7cd-Ea1 HL E6 English	70M-Te AH T3 Technology	7cd-Ma4 JCW M1 Maths	70A-Ge MK G3 Geography	7cd-Ma4 BR M1 Maths
3	7cd-Sc3 MCD S10 Science	70A-Ge MK G3 Geography	7cd-Ea1 HL E6 English	70A-Hi AB H3 History	7cd-Ea1 HL E6 English
4	7cd-Ma4 JCW M1 Maths	7cd-Sc3 MCD S11 Science	7cd-Sc3 FK S9 Science	70A-Rs CP RS3 Religious	70 Ga2 KM PH2 Games
5	70M-Pe MEC SP2 Physical E	70A-It DCM IT2 Info Techn	7cd-Sc3 MCD S11 Science	70M-Te LB T3 Technology	70 Ga2 KM PH2 Games
6					

One copy of timetable